

Figure S1: 12-lead electrocardiogram revealing the lambda-like waveform. 1A: Followed by a premature ventricular contraction, and 1B: Followed by paroxysmal ventricular tachycardia.

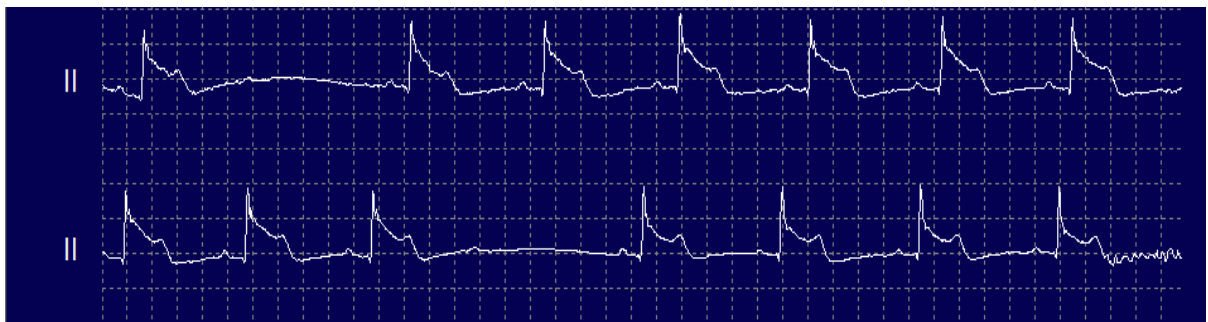


Figure S2: ECG presenting a lambda-like waveform followed by second degree atrioventricular block in the II lead.

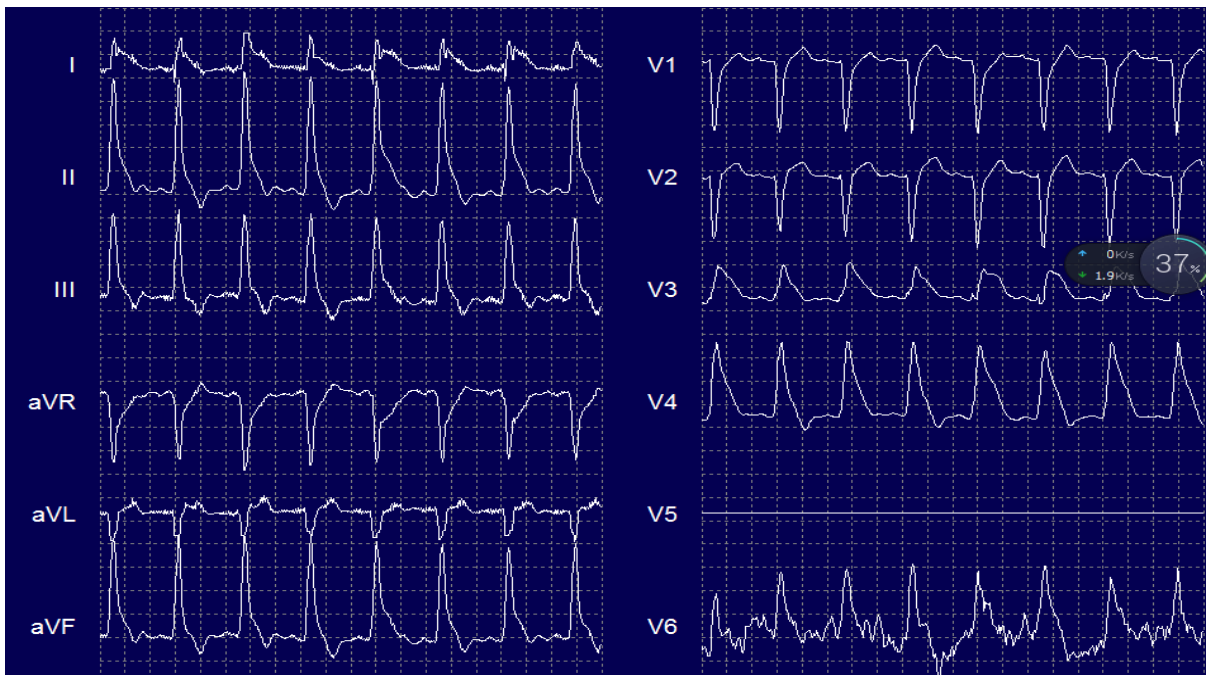


Figure S3: ECG with a dropped V5 electrode and an unstable V6 baseline revealing T-wave alternans in inferior (II, III, and aVF) and lateral (V4) leads before the impending malignant arrhythmia.

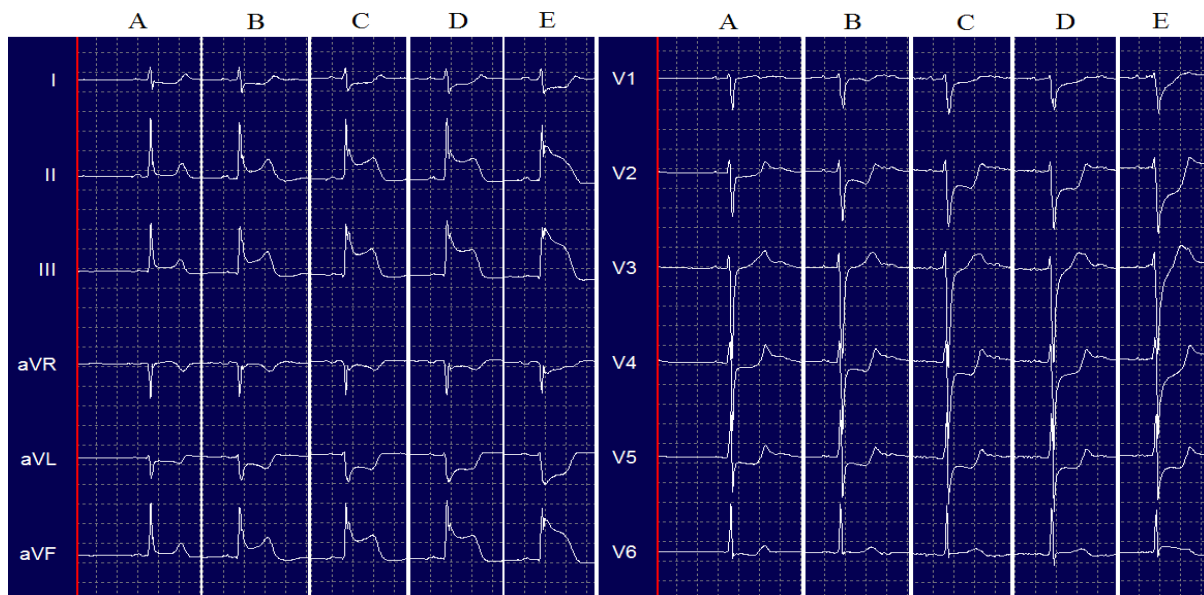


Figure S4: Morphological development of ST-segment elevation recorded by Holter monitoring in the inferior (II, III, and aVF) leads. A, B, C, D, and E stand for different and prolonged times.